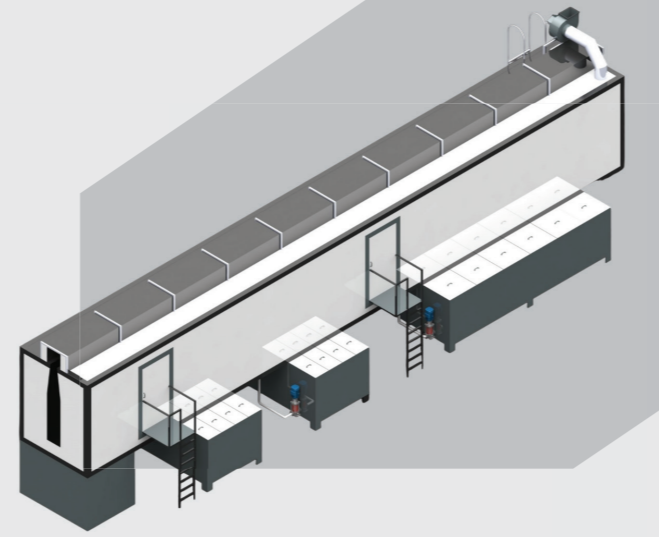


POWDER COATING LINE

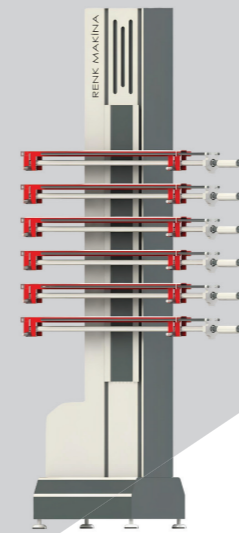
WASHING LINE

The line is in the form of a tunnel, and while the materials to be cleaned move through the tunnel with a horizontal conveyor called web and cardan type, it cleans the product by absorbing oil residue and similar dirt on the material with high-pressure chemicals. In the next stage, the product entering the rinsing tunnel is completely stripped of oil and dust and ready for painting.



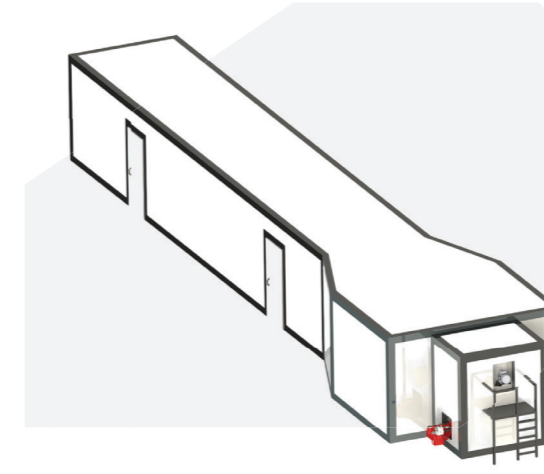
USAGE AREAS

- ✓ Aluminum Profile Industry
- ✓ Metal and Furniture Industry
- ✓ Health & Service Sector
- ✓ Automotive Parts
- ✓ White Goods Industry
- ✓ Kitchen & Bathroom Equipment
- ✓ Market and Store Shelves
- ✓ Signs, Boards and Signboards
- ✓ Corrosion Resistant Surfaces
- ✓ Glass and Ceramic Ware
- ✓ Elevator Door & Steel Doors
- ✓ Wooden Doors and Windows
- ✓ Bathroom and Kitchen Countertops
- ✓ Panel, Radiator, Towel Warmers
- ✓ Wood, Marble, Surfaces



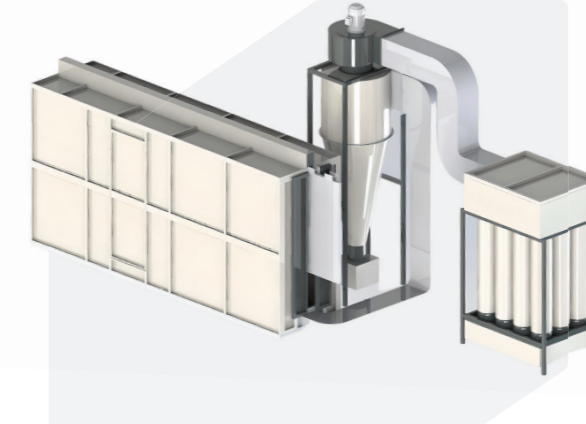
DRYING OVEN

The parts washed in the chemical cleaning line enter the drying oven, the drying process takes place at low temperature, and the surface of the part to be painted is made completely dry for the powder coating process.



COOLING UNIT

It means that the products coming out of the drying oven reach a certain degree of coldness from the cooling unit and become ready for dyeing.

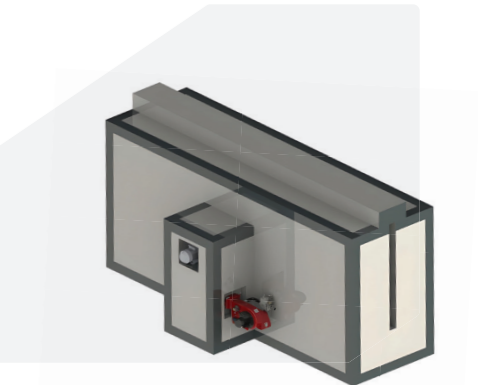


POWDER COATING CABINET

The dyeing process takes place by entering the paint booth of the products coming out of the drying oven and cooling in the cooling zone. In this system, dust particles are not broken down and the surface quality of the paint in transformation does not deteriorate. The air used in the system must be clean, dry and free of oil. Thanks to the powder paint collection drawer under the cabin, the accumulated powder paint can be reused.

CURING OVEN

In the tunnel-shaped curing oven, the powder coated products enter the oven at an average temperature of 180°C (temperature may vary depending on the paint feature) and the parts are cured.



COOLING UNIT

The parts coming out of the furnace must be cooled both for the surface quality and for the personnel in the unloading department to unload them. For this purpose, the parts taken out of the oven are cooled by passing through the cooling unit. Painted and cooled products are taken from the unloading area with the help of personnel.

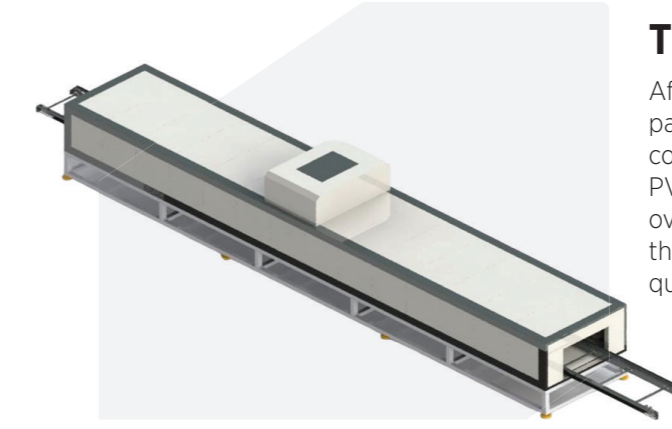


WET PAINT LINE



SINGLE AXIS INTEGRATED CLOSED TYPE WET PAINT CABINET WITH WATER CURTAIN

It is the cabin where paint is applied in wet paint facilities or manual wet paint applications, and overspray particles formed inside are filtered and exhausted. Linear slide-axis robots integrated into the cabin system provide forwardbackward movement, generally enabling products or parts to move or rotate in a certain direction.

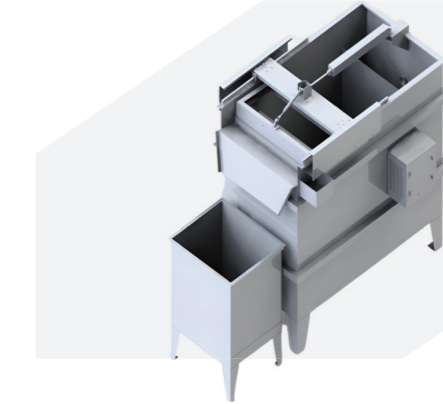
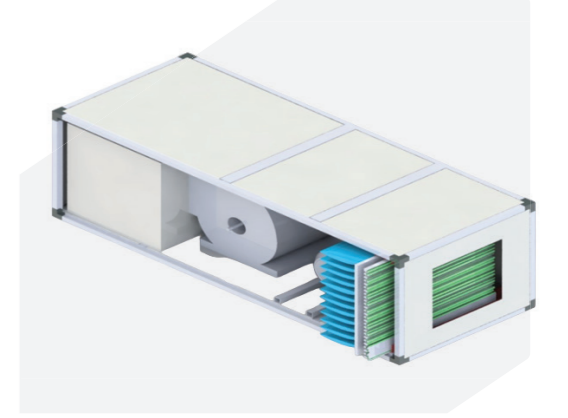


TUNNEL TYPE OVEN

After paint application, drying ovens are used to dry the parts. These ovens are tunnel type drying ovens placed at the continuation of the paint line. They are produced with wire tape or PVC tape depending on the drying temperature. Heating of the ovens is done with natural gas or resistance options. By adjusting the belt speed inverter, the paint is ensured to dry to the desired quality.

POSITIVE UNIT

It helps reduce the entry of external pollutants by creating a pressure difference within the cabin. The air inside the cabin has a higher pressure than the outside environment, which prevents air flow from outside to inside and keeps the cabin interior clean. By distributing the paint spray homogeneously on the parts, clean air passes through the filters and provides positive (+) pressure.

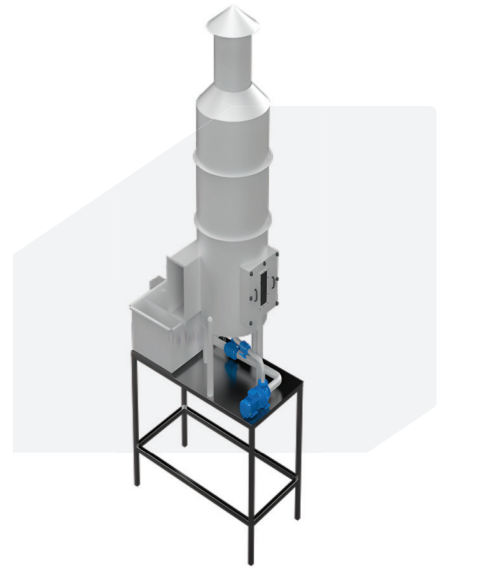


MUD SCRAPER

It separates waste paint from water in water curtain and venturi type paint booths. It can use water for a long time in a closed cycle. The sludge separator system can be connected to cabins with water curtains and water passages. It is made of stainless steel and maintenance is sufficient once a year. Its biggest advantage is that it automatically separates paint sludge. In this way, it extends the life of the paint booth.

CHIMNEY WASHING

It is a system designed to cleanly exhaust the dirty air coming out of the cabin exhaust fan to the environment. The system, which is coupled to the exhaust fan outlet as its working principle, absorbs harmful gases such as CO2 and prevents them from being exhausted outside, thanks to the washing curtain formed by the flowing filter and nozzles inside.



COOLING UNIT

The parts coming out of the furnace must be cooled both for the surface quality and for the personnel in the unloading department to unload them. For this purpose, the parts removed from the oven are cooled by passing through the cooling unit.

USAGE AREAS

MutfaAluminum Profile Industry • Metal and Furniture Industry • Health & Service Sector • Automotive Parts
White Goods Industry • Kitchen & Bathroom Equipment • Market and Store Shelves
Signs, Boards and Signboards • Corrosion Resistant Surfaces • Glass and Ceramic Ware
Elevator Door & Steel Doors • Wooden Doors and Windows • Bathroom and Kitchen Countertops
Panel, Radiator, Towel Warmers • Wood, Marble, Surfaces

+90 212 549 29 50
info@renkmakina.com

Renk Makina San. ve Ticaret Ltd. Şti.
Esenler Sanayi Sitesi Ortaklar İş Merkezi A3 Blok
Kat: 3 No: 76 Başakşehir, İstanbul - Türkiye

www.renkmakina.com

